

SAFE-STOP® 180° TMA

NCHRP 350, TL-3 PROTECTION IN A COMPACT DESIGN



OVERVIEW

The Safe-Stop TMA with the 180° Tilt feature provides maximum protection with minimal length, weight and height. The 180° Tilt feature makes this TMA the shortest height TMA when in its storage mode, which is ideal for garage storage and low underpasses.

The Safe-Stop 180° TMA folds at the center, reducing the total system's height to just 2.08 m (6'10") in the storage mode. The two cartridge sections literally stack on top of each other.

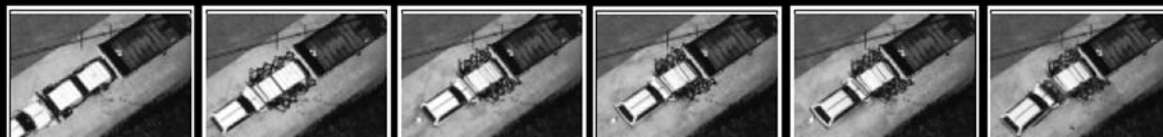
The Safe-Stop 180° TMA was successfully tested to NCHRP 350 TL-2 (70km/h - 43 mph) criteria when impacted in storage (folded) mode by a 2000 kg pickup truck.

FEATURES AND BENEFITS

- ▶ Passes all mandatory and optional NCHRP 350 100km/h (62 mph) tests.
- ▶ Tested to NCHRP 350 TL-2 criteria in storage mode*.
- ▶ Over 50% reusability after a typical design impact.
- ▶ Simple attachment options mount to standard truck underrides.
- ▶ Attaches to existing Safe-Stop TMA mounts for standard and tailgate operations.
- ▶ "Quick Mount" option allows for extremely simple and fast deployment and removal of the TMA.
- ▶ Withstands nuisance hits up to 10 km/h (6 mph).



SAVING LIVES BY DESIGN



ENERGY ABSORPTION
SYSTEMS, INC.

TESTED TO BE THE TOUGH TMA



The Safe-Stop 180° TMA

- ▶ Successfully passed NCHRP 350 TL-3 100km/h mandatory criteria.
- ▶ Successfully passed NCHRP 350 TL-3 100km/h optional criteria.
- ▶ Successfully tested to NCHRP 350 TL-2 70km/h criteria in storage mode*.
- ▶ Withstands nuisance impacts up to 10 km/h (6 mph) with little or no damage.
- ▶ Successfully passed vibration, corrosion and water resistance tests.
- ▶ Field tested over 4000 km (2500 miles).

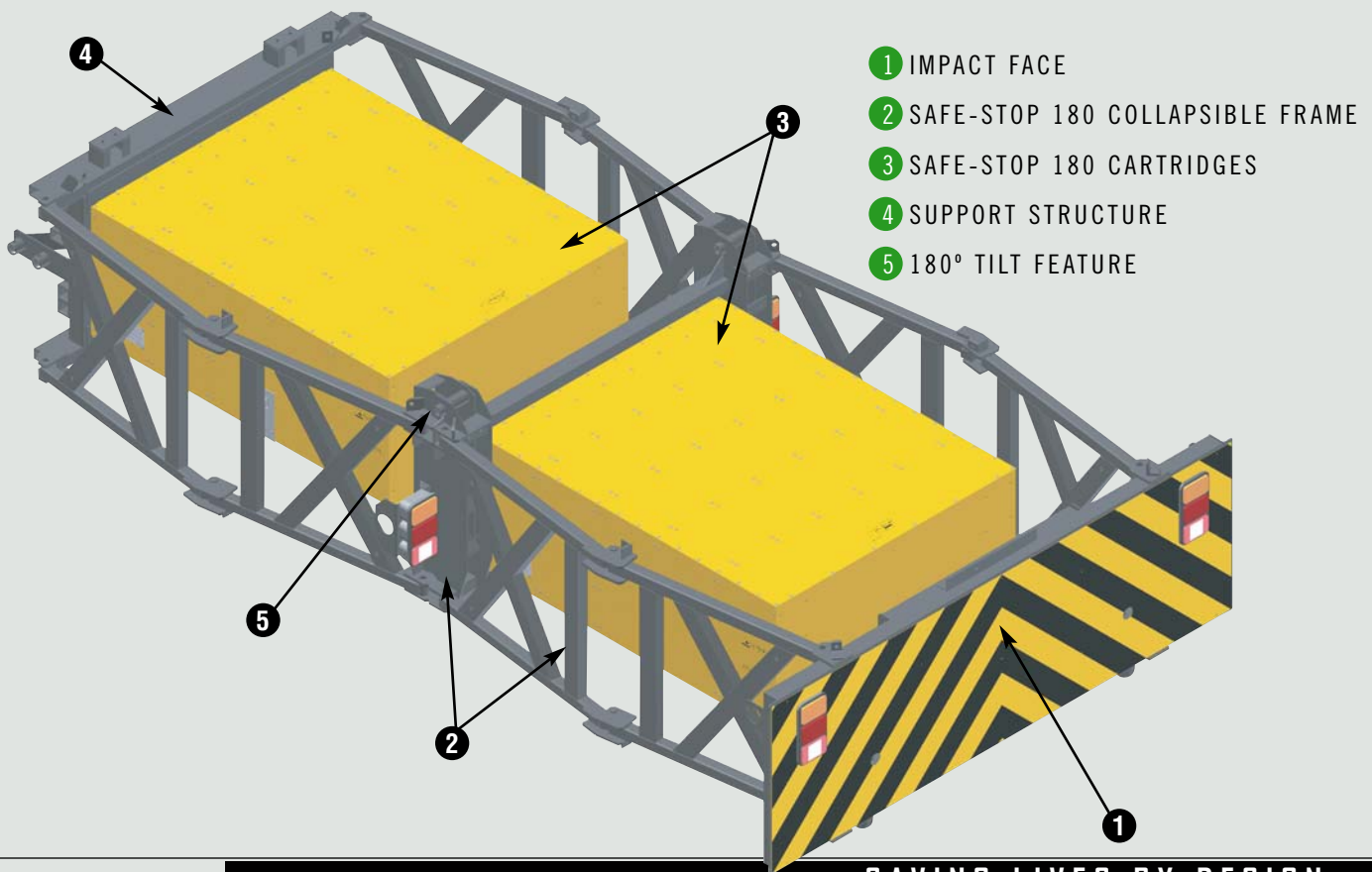
SPECIFICATIONS

STORAGE MODE

Height	2.08 m (6'10")
Length From Back of Truck	2.39 m (7'10")
Width	2.36 m (7'9")
Weight	943 kg (2080 lb.)
Road Clearance	30.5 mm (12"±1")

DEPLOYMENT MODE

Height	1.27 m (4'2")
Length From Back of Truck	4.39 m (14'5")
Width	2.36 m (7'9")
Weight	943 kg (2080 lb.)
Road Clearance	30.5 mm (12"±1")



- 1 IMPACT FACE
- 2 SAFE-STOP 180 COLLAPSIBLE FRAME
- 3 SAFE-STOP 180 CARTRIDGES
- 4 SUPPORT STRUCTURE
- 5 180° TILT FEATURE

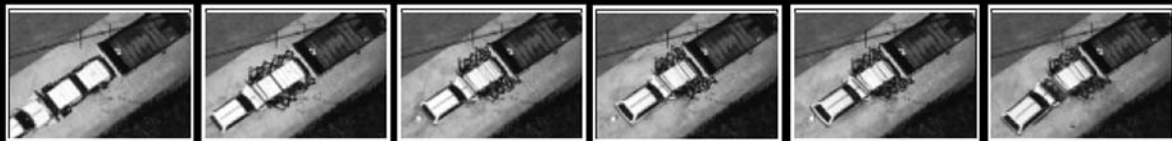


WWW.QUIXTRANS.COM



35 East Wacker Drive • Chicago, IL 60601
 Tel: (312) 467-6750 • Fax: (312) 467-9625
 www.energyabsorption.com

SAVING LIVES BY DESIGN



Distributed By:

General specifications for the Safe-Stop 180° TMA are subject to change without notice to reflect improvements and upgrades. Additional information is available in the Product Manual for this system. Contact Energy Absorption Systems for details.

*The Safe-Stop TMA was impacted in storage (folded) mode with a 2000kg vehicle traveling at 70km/h to meet NCHRP 350 TL-2 criteria in storage mode.