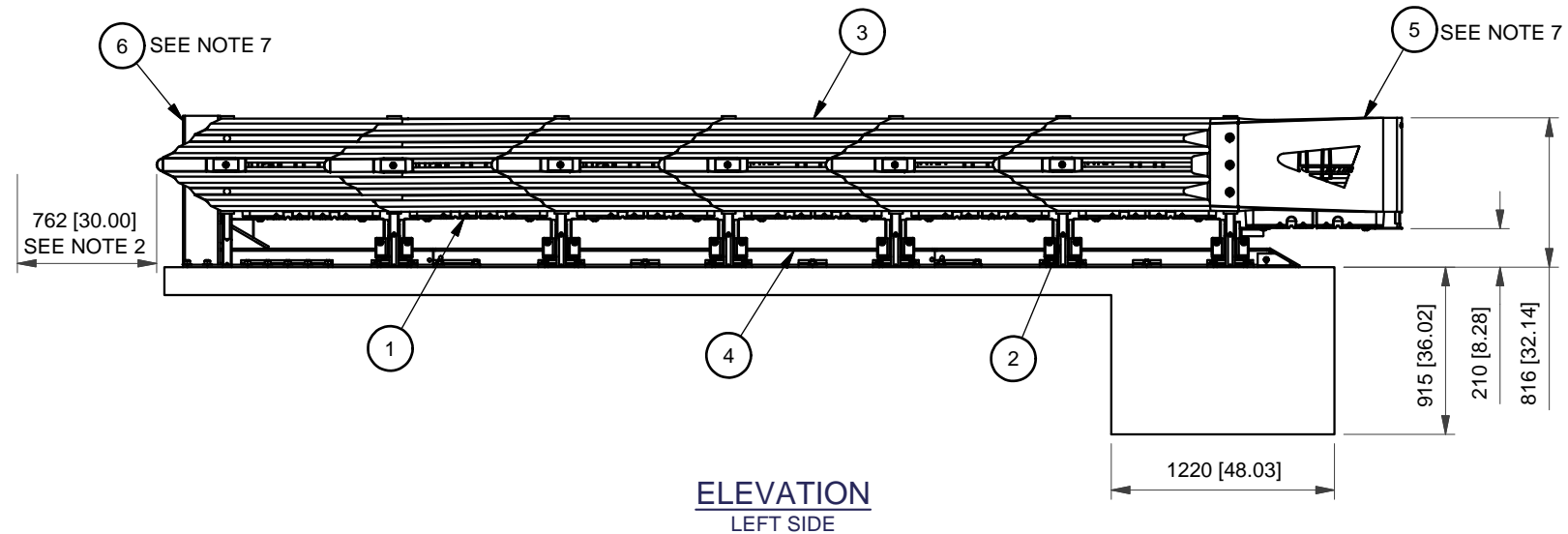


PLAN



ELEVATION
LEFT SIDE

NOTES:

1. IN COMPLIANCE WITH THE AASHTO 2002 ROADSIDE DESIGN GUIDE, MANUFACTURER RECOMMENDS REMOVAL OF ALL CURBS AND ISLANDS TO ENSURE PROPER IMPACT PERFORMANCE.
2. PROVISION SHALL BE MADE FOR REAR FENDER PANELS TO SLIDE REARWARD UPON IMPACT 762 [30.00] MIN.
3. 150 [6.00] MIN. REINFORCED 28 MPa [4000 PSI] P.C. CONCRETE PAD OR 200 [8.00] MIN. NON-REINFORCED 28MPa [4000 PSI] P.C. CONCRETE ROADWAY, MEASURING AT LEAST 3.66 m [12'-0"] WIDE BY 15.24 m [50'-0"] LONG.
4. SEE THE "QUADGUARD M10 SYSTEM PRODUCT MANUAL" FOR A DESCRIPTION OF ITS IMPACT PERFORMANCE CHARACTERISTICS AND DESIGN LIMITATIONS BEFORE PLACING A SYSTEM AT A GIVEN SITE. INFORMATION AND COPIES OF ABOVE MANUAL ARE AVAILABLE BY CALLING CUSTOMER SERVICE DEPARTMENT AT (888) 323-6374.
5. WHERE NECESSARY, THE CUSTOMER SHALL SUPPLY AN ADEQUATE TRANSITION FROM THE QUADGUARD M10 SYSTEM TO THE OBJECT BEING SHIELDED.
6. UNITS OF MEASUREMENT ARE MILLIMETERS [INCHES] UNLESS OTHERWISE NOTED.
7. BACKUP, MONORAIL, AND NOSE ASSEMBLIES ARE NOT INCLUDED IN MODEL NUMBER, ORDER SEPARATELY.
8. THE QUADGUARD M10 SYSTEM HAS BEEN TESTED TO MASH.
9. TENSION STRUT SHOWN. ALSO AVAILABLE WITH CONCRETE BACKUP.

BAYS	610 [24"] WIDTH	762 [30"] WIDTH	914 [36"] WIDTH	MAX DESIGN SPEED	NO. OF CARTRIDGES
**	MODEL #	MODEL #	MODEL #	Km/h [MPH]	TYPE M-I TYPE M-II
6	QM10524	QM10530	QM10536	100 [62]	4 3

KEY	① CARTRIDGE	④ MONORAIL
	② DIAPHRAGM	⑤ NOSE ASSEMBLY
③ FENDER PANEL	⑥ BACKUP	

Revision	Date	Rev	By	Chk.	App.

SERIAL NO.
SALES ORDER
EH PROJECT
NO. OF UNITS

REFERENCES

DIAPHRAGM ASSY.	35-40-07
SHIM KIT, DIAPHRAGM	3540078-0000
NOSE ASSY.	617385
FENDER PANEL ASSY.	35-40-04
BACKUP ASSY.	35-40-03
MONORAIL ASSY.	35-40-75
CONCRETE PAD	35-40-76

DRAWN: D. Standridge	DATE: 4/21/2010
DESIGNED: S. Thompson	DATE: 12/15/2009
CHECKED:	DATE:
APPROVED:	DATE:
FILE: QMTSCVR-U.idw	

UNIDIRECTIONAL



QUADGUARD M10 SYSTEM
NARROW SYSTEM WITH TENSION STRUT BACKUP

SCALE:	DRAWING: QMTSCVR-U3	SHEET: 1 of 1	REV
--------	------------------------	------------------	-----