

LS-Pro[®] TMA

THE MUNICIPAL MARKET LOW SPEED PROTECTION TMA



OVERVIEW

The LS-Pro TMA is designed to shield workzone vehicles during low speed impacts. This low speed, low cost system will safely stop vehicles weighing 1808 to 4410 lb. (820 to 2000 kg) at impact speeds up to 30 mph (50 km/h). The cartridge is lightweight, weighing approximately 200 lb. (90 kg), and compact, measuring only 4 ft. (1.2 m) in length. The LS-Pro TMA can be easily installed using a simple socket hitch attachment. The LS-Pro TMA has been tested and accepted to meet NCHRP 350, TL-1 for TMA systems.

The Durashell
Nose returns to
its original
shape after low
speed nuisance
impacts



FEATURES AND BENEFITS

- ▶ Partially reusable design means low life-cycle cost.
- ▶ Versatile, unique, protection for slow moving or stopped work vehicles.
- ▶ Short length improves maneuverability and eliminates the need for hydraulics.
- ▶ Can be quickly mounted or removed from the work vehicle.
- ▶ Meets NCHRP 350 TL-1 testing criteria at 30 mph (50 km/h).
- ▶ Ideal for municipality vehicles, utility maintenance vehicles and street sweepers.
- ▶ Lightweight design means superior portability. Entire unit weighs about 535 lb. (243kg).
- ▶ Self contained cartridge eliminates post impact debris for easy clean up.

SAVING LIVES BY DESIGN



**ENERGY ABSORPTION
SYSTEMS, INC.**

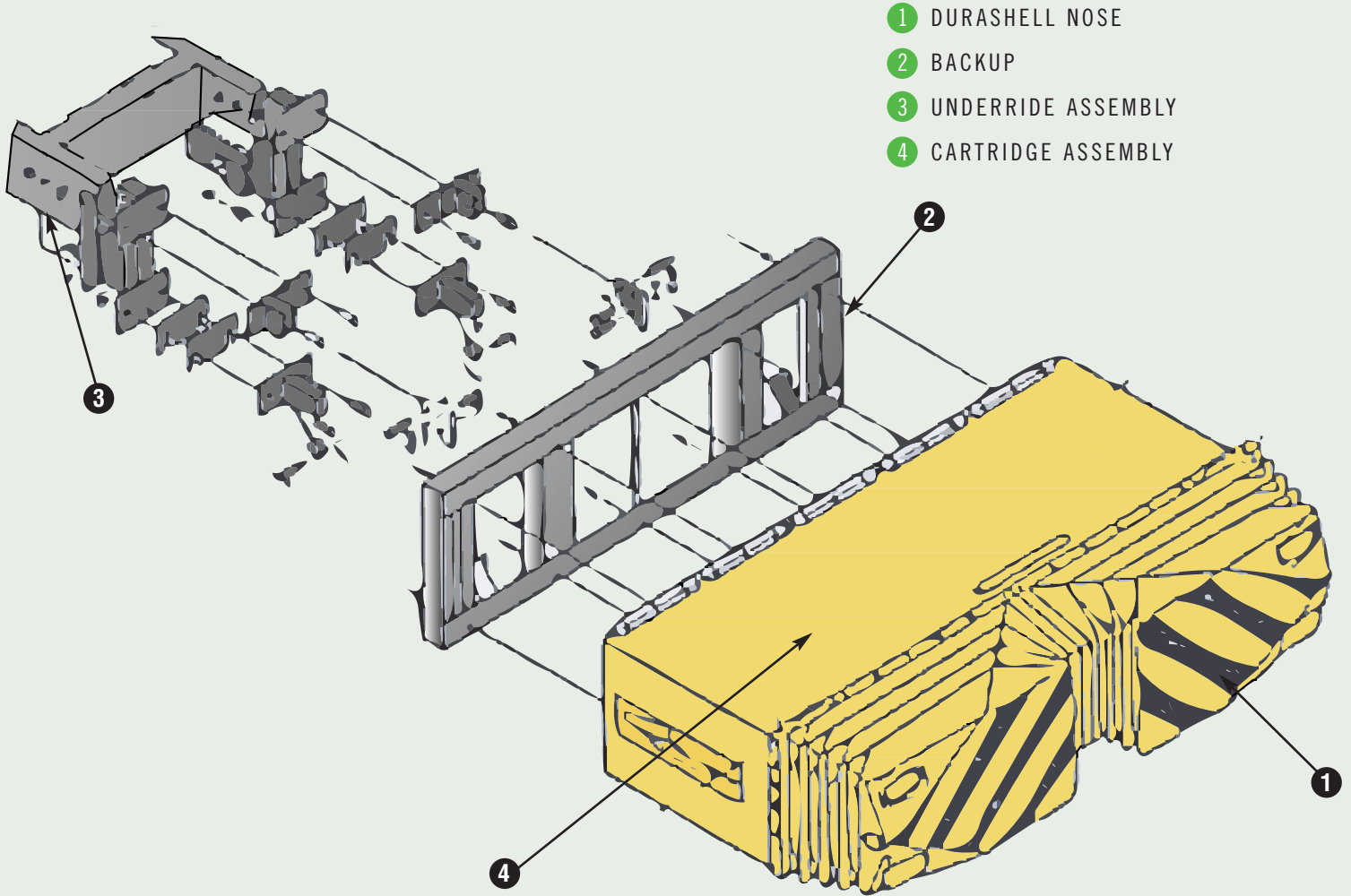
WWW.ENERGYABSORPTION.COM

SUPERIOR IMPACT PERFORMANCE

The design of the LS-Pro TMA is derived from the tested and proven Alpha 2001 MD® cartridge. Corner damage caused by common nuisance impacts is minimized by the tapered shape of the durable, Durashell® nose. The LS-Pro TMA, like the highly acclaimed, world renowned ALPHA 2001 MD TMA, helps control costs, while maintaining a high level safety standards for work zone vehicles.

SPECIFICATIONS

Length (from Back of Truck)	1.44 m (4'8")
Width	2.36 m (7'8")
System Weight	243 kg (535 lb.)
Road Clearance	31 cm (12.5" ± .25")



- 1 DURASHELL NOSE
- 2 BACKUP
- 3 UNDERRIDE ASSEMBLY
- 4 CARTRIDGE ASSEMBLY



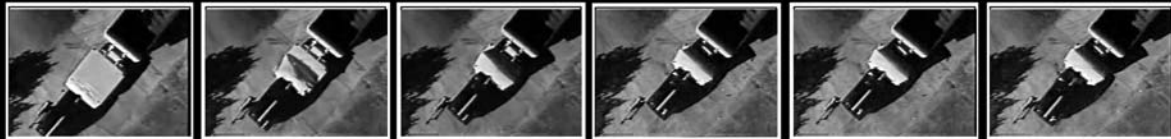
WWW.QUIXTRANS.COM



ENERGY ABSORPTION
SYSTEMS, INC.

35 East Wacker Drive • Chicago, IL 60601
Tel: (312) 467-6750 • Fax: (312) 467-9625
www.energyabsorption.com

SAVING LIVES BY DESIGN



Distributed By:

General specifications for the LS-Pro TMA are subject to change without notice to reflect improvements and upgrades. Additional information is available in the Product Manual for this system. Contact Energy Absorption Systems for details.